



Simple Strategies for In-Depth Malware Defense

Date: Tuesday, May 15, 2018
Time: 5:30 (Deli snack) - 6:00 (Meeting)
Location: BrassCraft Manufacturing Company
39600 Orchard Hill Place
Novi, MI 48375-5331 ([map](#))
Speaker: Sandi Moore
Presentation:

[Simple Strategies for in-depth Malware Defense](#)

Overview:

In today's world of advanced malware, zero-day attacks, and stealthy threats, simply having visibility into the malware affecting your organization is not enough.

If you want to protect your business from the costs, risks, and brand damage that these threats can cause, you need to consider a more comprehensive approach to complete malware defense.

Multi-platform networks, internet connectivity, and mobile computing—as well as the use of IBM Power Systems as file servers—have changed the rules.

It is now a necessity to include your IBM Power servers in your corporate malware guidelines.

Join this webinar to learn simple strategies for protecting your systems. Sandi will share with you:

- The current state of malware and the latest trends
- How organizations are looking to expand detection and ultimately protection
- What's included in an advanced malware defense strategy
- How Stand Guard Anti-Virus protects your AIX, Linux, and IBM Power servers

This event will arm you with the information you need to secure your systems against today's most pressing threats.

About the Presenter:

Sandi has been working with HelpSystems customers for over 15 years supporting systems monitoring and security software. With experience on IBM i, AIX, and Linux, she has been involved in product demonstrations, implementation, support, training, research, and product testing.

In her time at HelpSystems, Sandi has helped customers understand how to effectively address the threats they face. Her goal is to help people achieve the best solution to their IT problems, no matter how many servers are in their environment or where in the world they're located.



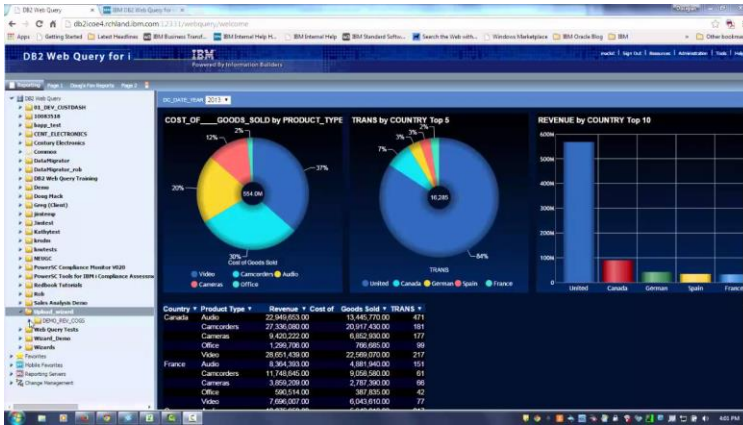
Organizations throughout the public and private sectors have relied on Sandi's expertise, whether they're seeking to proactively protect their systems or improve security controls after a malware attack. Sandi has shared her knowledge at multiple user group conferences, including COMMON.

From the President:

Dear Members:



We are very pleased to have Sandi Moore from Helpsystems present on a very timely topic “ Simple Strategies for In-Depth Malware Defense”. With changes over the years everyone now has to be concerned and consider a strategy against invasion by unwanted visitors. You’ll be sure to walk away with useful tips that can be applied within your environment. Join us onsite at Brasscraft or remotely via webex on Tuesday May 15th.



Plans are in the works for June to include a Web Query topic presented by Doug Mack from IBM Rochester. Stayed tuned for details. Plans are in progress and will be posted shortly on the group web site. Web Query is a very robust tool that provides a desirable option on the IBM i platform to meet data analytics/business intelligence needs. The product continues to be upgraded with new features and functionalities. Join us in June to find out more.

MICHIGAN IBM POWER SYSTEMS TECHNICAL EDUCATION CONFERENCE

POWER YOUR FUTURE

WHEN
 June 14 2018
 Starting at 7:30 am

WHERE
 Livonia, MI
 VisTaTech Center at Schoolcraft College

MITEC 2018 registration is open. The event will be held at the schoolcraft college vistatech center in Livonia Michigan. Take advantage of early bird rates. Vistatech is an exceptionally well suited venue for the event. We're making great use of the auditorium featuring presentations including: POWER9 Trends and Directions presented by Tracy Smith, Watson Case Study and Hidden Gems presented by Alison Butterill, Jesse Gorzinski and Time Rowe, It's not just AS400 presented by Tom Huntington.



We'll be celebrating IBM i's 30th anniversary during the event.



The event is packed full again this year including presentations from: Tracy Smith, John Bizon, Larry Bolhuis, Alison Butterill, Jim Buck Doug Mack, Evan Hollander, Mike Pavlak, Leonardo Llames, Scott Palma, Mike McGuffin, Tim Rowe, Greg Patterson, Charles Guarino, Joe Armstrong, Rick Garza, Jesse Gorzinski, Debbie Saugen, Tom Huntiongton, Erwin Earley, Larry Armond and Amit Harchandani. The event will feature vendor expo, lots of students participation. (including student meet and greet session), over 50 sessions to choose from, food provided by the schoolcraft college culinary institute, celebrating IBM i 30th anniversary and much more. Take advantage of the user group, group rate, early bird rates. Visit www.gomitec.com for more details.

The event will again feature students. If you're looking to connect with students and colleges the event will feature a student meet and greet session providing the perfect opportunity to do so.



We will be giving away a MITEC registration during May user group meetings. The registration is open for registered user group members that join in May meetings.

We look forward to seeing you at upcoming user group activities.



Happy Spring!

Regards,

Laura



Southeast Michigan iSeries User Group



Southeast Michigan iSeries User Group
P.O. Box 99284, Troy, Michigan 48099-9284
Membership Renewal
January - December

Date: _____

Company Name: _____

Company Web Site: _____

Mailing Address: _____

Primary Contact: _____

(Voting Member)

Phone: (____) ____ - _____ Fax: (____) ____ - _____

E-Mail: _____

The primary contact will have the responsibility for member voting as stipulated in the constitution. The primary contact name can be changed at will by the member company. Membership voting rights are limited to one person employed by an organization regardless of holding an individual or organization membership.

Paper copies of the newsletter are no longer being mailed. The newsletter will be distributed through email (usually in PDF format). Feel free to forward the email on to others.

Annual dues per member company - \$100.00; Individual memberships are available for \$50.00 (An individual is defined as a person not directly employed by an organization or a person employed by an organization paying membership dues from personal funds). Memberships are for the calendar year, January through December. Dues are not prorated for a partial year. Please make check payable to: Southeast Michigan iSeries User Group.

Donations are appreciated: Donation: _____