



Southeast Michigan IBM i User Group



Let's Get Mobile

(A Hands On Introduction to IBM i Mobile Access)

Mobile is becoming more and more the norm. People want to be able to access and manage their systems from their Mobile devices basically anywhere.

Having a robust easy to use solution is key.

The new iAccess Mobile Solutions support is just that. Bring your own Device along and follow along as we all access an IBM i with our Mobile device. Look at Spool Files, respond to messages on the QSYSOPR Message Queue, work with Jobs, Run SQL Scripts and play with the 5250 Green Screen interface.

Everything you need to Access and Manage your system is just a 'swipe' away.

About the Presenter

Wayne Bowers has been with IBM since 1997, where he works with the IBM i Global Support Center in Rochester MN. He is an Advisory Software Engineer specializing in the support of the IBM i Access (aka Client Access) products, Integrated Blade server solutions, and the TCP Telnet communications server. Wayne has been developing and delivering presentations on IBM i Access products since 1999, and at COMMON since 2009.



From the President:

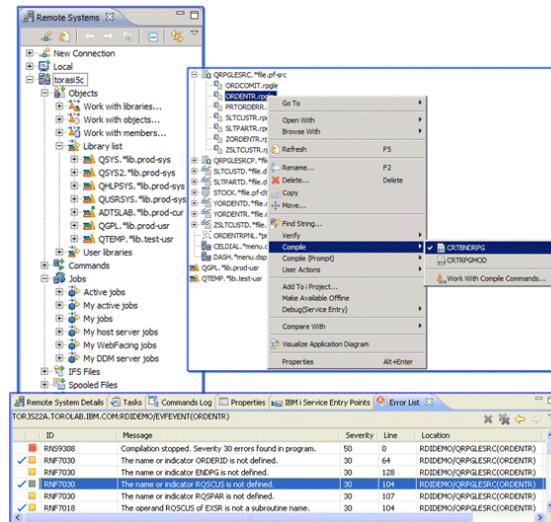


Dear Members:

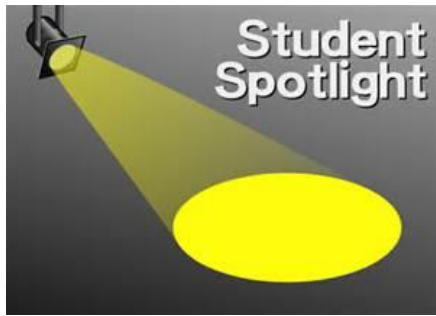
Happy New Year!

2015 was an exciting year and we have a lot to look forward to in 2016.

Mobile is hot and for good reason. Technology is changing making it easier to create practical mobile solutions. We're kicking off the New Year with a presentation on IBM i access for web Mobile. Pretty much everyone has access to and uses mobile devices. You'll not want to miss January's meeting as you'll be able to walk away with something you're able to put to use. Join us onsite or remotely in webinar format on Tuesday January 19th.



In February we're tackling another hot topic "RDP". Charles Guarino will be continuing our education and insight on RDP. If you're not already making use of RDP, February will help you gain insight and encouragement to move forward. Whether you're just beginning or are already making use of RDP you'll be sure to enjoy and learn February's presentation.



We'll also be kicking off the student RPG project effort. If you have a small RPG project in mind for the activity, please make sure to contact anyone on the SEMIUG board by January 31st. The project should be smaller in scope and will be coded using RPG. We will have students work on a solution and will share the finished projects during our March meeting. The organization that provides the project will be able to choose a student's finished project to implement within their production

environment. If you would like more information or have a possible project for the activity please do step forward. Involving and encouraging student resource is vital to our community.



PAY YOUR MEMBERSHIP DUES

It's that time of year again! If you haven't already done so, please renew your SEMIUG membership. Dues are very affordable and provide funding for the group to be able to continue to bring world class, current education to our local IBM i community. As a member you're automatically a COMMON member and are provided COMMON membership benefits. COMMON's 2016 fall event will be held in Columbus, Ohio. Members are entitled to join in monthly meetings and SEMIUG activities. Dues are \$50 for individual membership or \$100. To renew you will find the membership renewal form at the bottom of the SEMIUG site membership tab page.

Let's look forward to an awesome 2016!

Regards,

Laura



Southeast Michigan IBM i User Group



**Southeast Michigan IBM i User Group
P.O. Box 80135, Rochester, Michigan 48308
Membership Renewal
January - December**

Date: _____

Company Name: _____

Company Web Site: _____

Mailing Address: _____

Primary Contact: _____

(Voting Member)

Phone: (____) ____ - _____ Fax: (____) ____ - _____

E-Mail: _____

The primary contact will have the responsibility for member voting as stipulated in the constitution. The primary contact name can be changed at will by the member company. Membership voting rights are limited to one person employed by an organization regardless of holding an individual or organization membership.

Paper copies of the newsletter are no longer being mailed. The newsletter will be distributed through email (usually in PDF format). Feel free to forward the email on to others.

Annual dues per member company - \$100.00; Individual memberships are available for \$50.00 (An individual is defined as a person not directly employed by an organization or a person employed by an organization paying membership dues from personal funds). Memberships are for the calendar year, January through December. Dues are not prorated for a partial year. Please make check payable to:

Southeast Michigan IBM i User Group.

Donations are appreciated: Donation: _____